

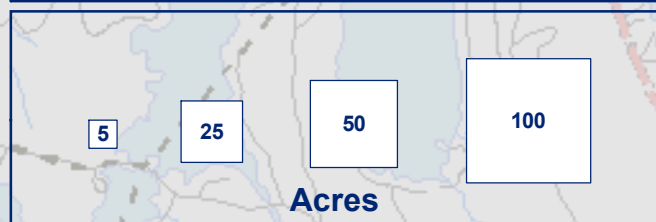
Town of Vienna

Kennebec County, Maine

2007 Comprehensive Plan Map 8: Cultural Resources

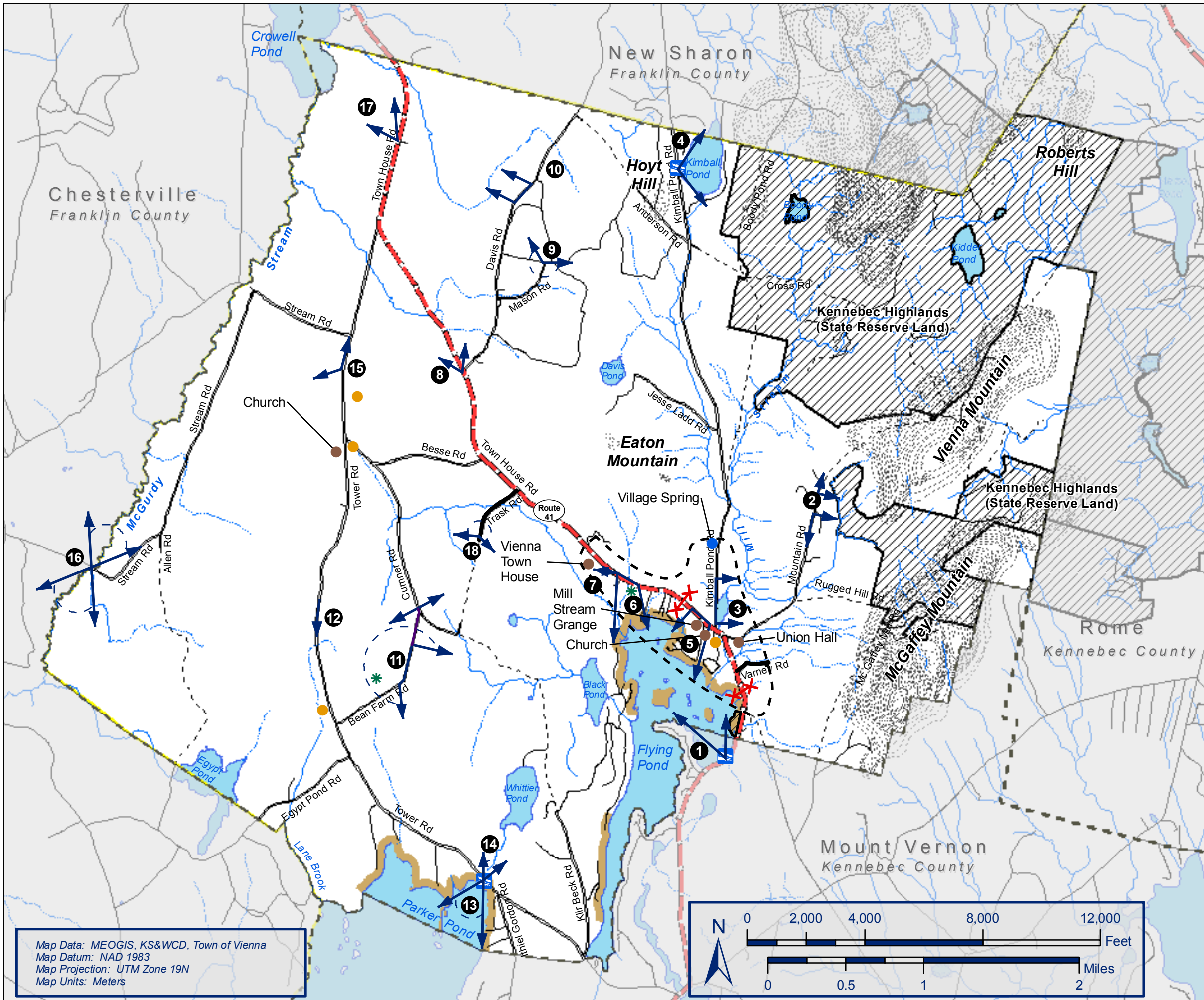
Map Legend

- Cemeteries
 - Historic Structures
 - Commercial Farmstead
 - Public Boat Access and Swimming Area
 - Potential Archaeological Resources
 - Village Gateways
 - Scenic Views *
 - Mountains / Elevation Over 1000 ft
 - Public and Semi-Public Recreation / Open Space Land
 - Vienna Village
- *Note: Refer to site number in text for description*
- ### Other Features
- Lakes and Ponds
 - Perennial Streams
 - Intermittent Streams
 - County Boundary
 - Town Boundary
 - State Highway
 - Public Roads
 - Private Roads
 - Unmaintained Roads



Kennebec Soil & Water Conservation District
GIS Department

Map Created on 11/09/07 by: J. Fredenburg
Neither KSWCD nor the town of Vienna assume any liability for the data delineated herein. This map is intended for reference only and does NOT represent a survey.



Map Data: MEOGIS, KS&WCD, Town of Vienna
Map Datum: NAD 1983
Map Projection: UTM Zone 19N
Map Units: Meters

